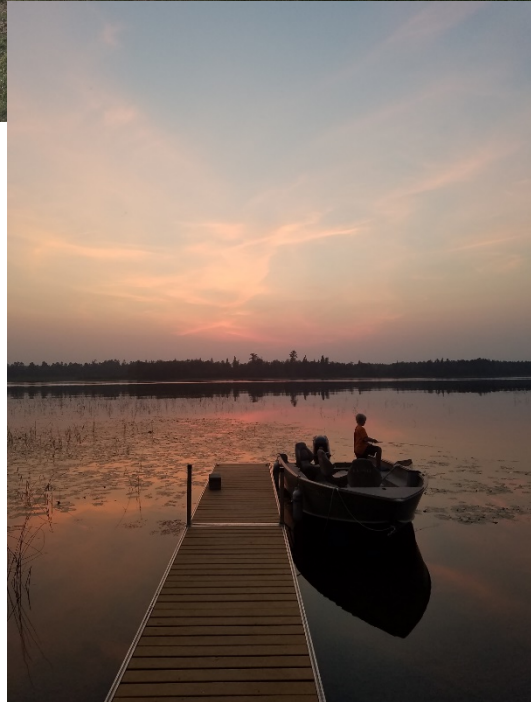


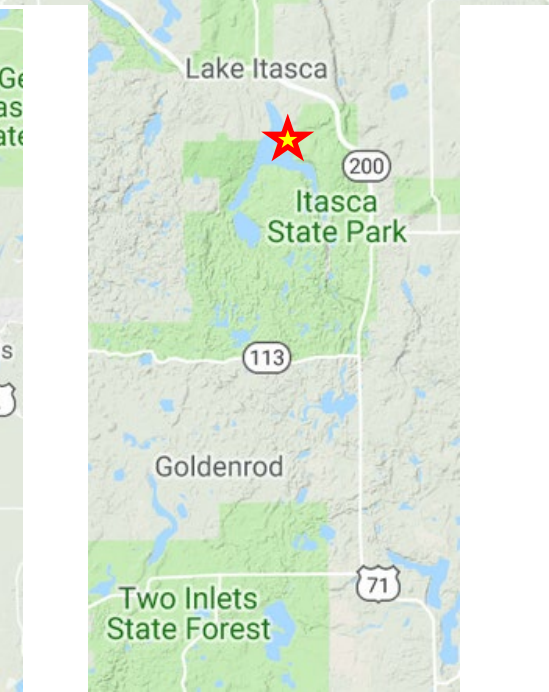
Itasca Biological Station & Laboratories – University of Minnesota

Maps of Station campus, Lake Itasca, and Research & Demonstration Areas



Station Campus and Lake Itasca Maps





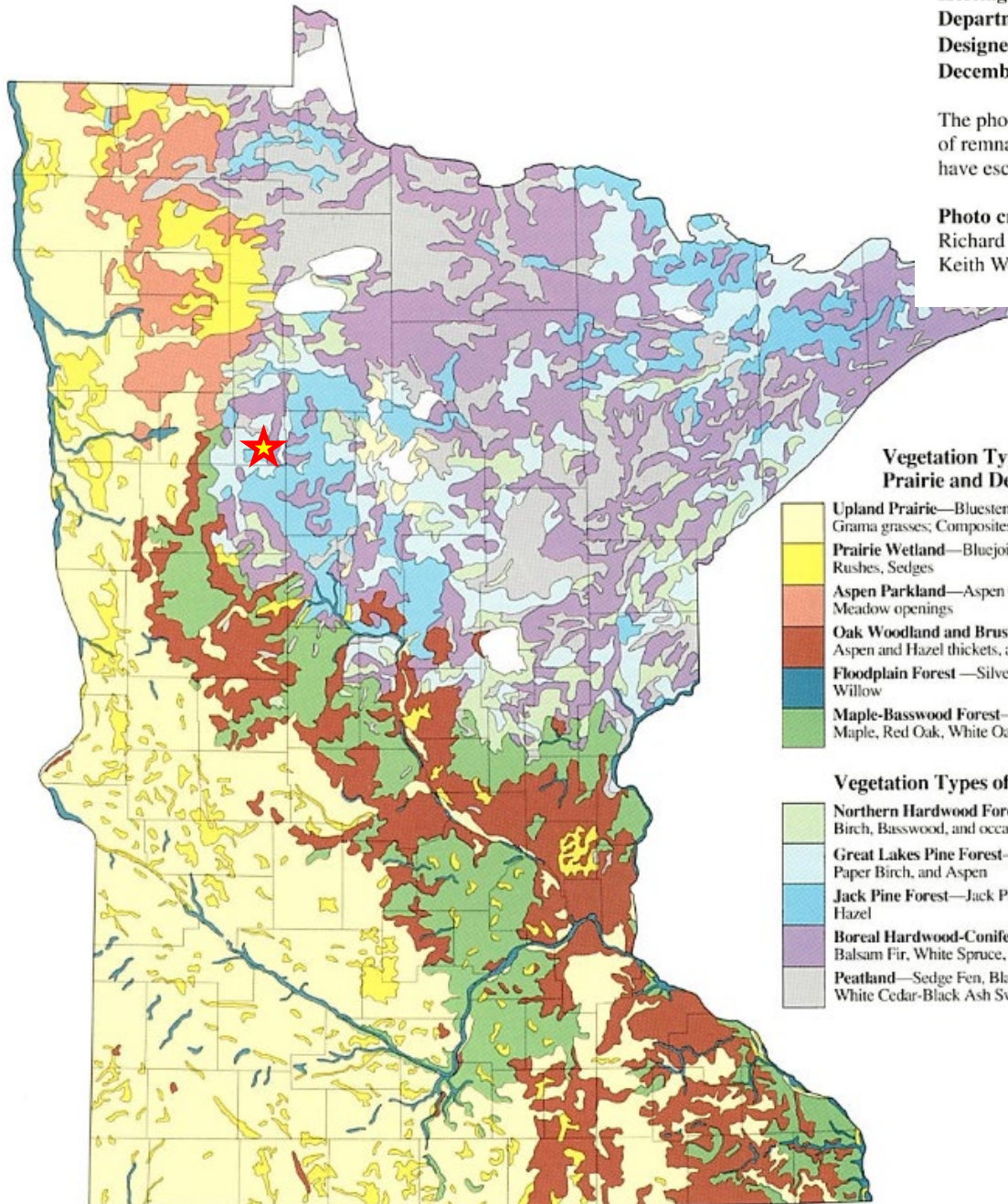
Text by Keith M. Wendt and Barbara A Coffin of the Natural Heritage Program, Section of Wildlife, Minnesota Department of Natural Resources,
Designed by Linda J. McNary
December 1988.



The photographs in this publication are of remnant natural vegetation types that have escaped significant human alteration.

Photo credits:

Richard Hamilton Smith, cover photos and 1, 3, 4, 7, 8;
Keith Wendt, photos 2, 5, 6, 9; Barbara Coffin, photo 10.



**Vegetation Types of the
Prairie and Deciduous Forest**

- Upland Prairie**—Bluestems, Indian Grass, Needle and Grama grasses; Composites and other forbs
- Prairie Wetland**—Bluejoint Grass, Cordgrass, Cattails, Rushes, Sedges
- Aspen Parkland**—Aspen Groves with Prairie and Sedge Meadow openings
- Oak Woodland and Brushland**—Bur Oak and Pin Oak, Aspen and Hazel thickets, and Prairie openings
- Floodplain Forest**—Silver Maple, Elm, Cottonwood, Willow
- Maple-Basswood Forest**—Elm, Basswood, Sugar Maple, Red Oak, White Oak

Vegetation Types of the Conifer Forest

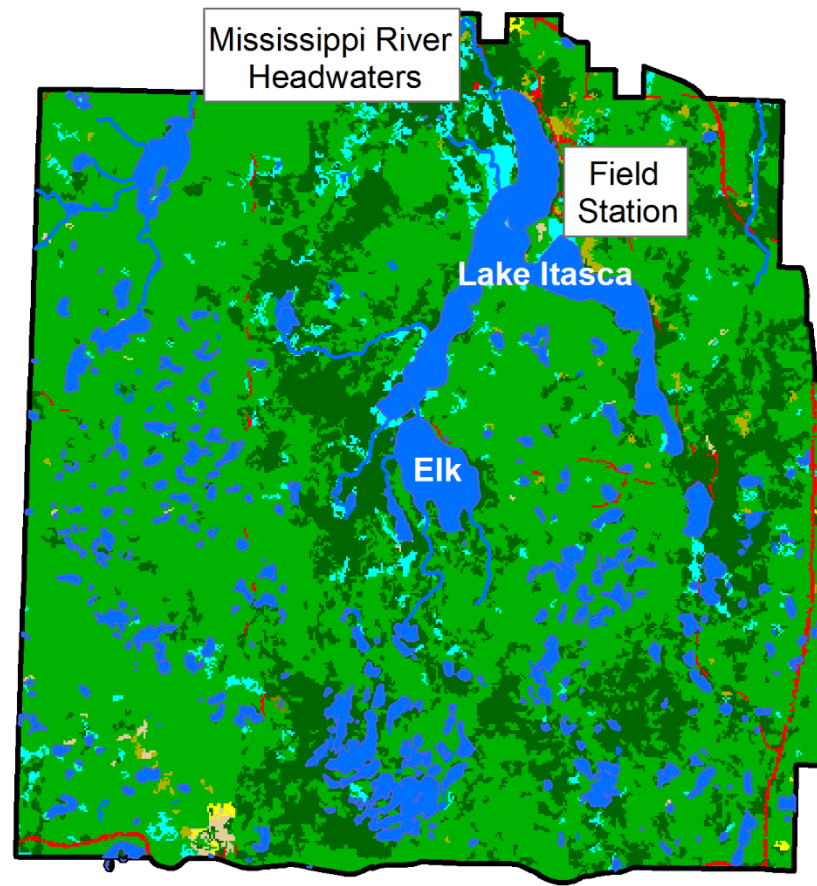
- Northern Hardwood Forest**—Sugar Maple, Yellow Birch, Basswood, and occasional White Pine
- Great Lakes Pine Forest**—White Pine, Red Pine with Paper Birch, and Aspen
- Jack Pine Forest**—Jack Pine with Red Pine, Oak and Hazel
- Boreal Hardwood-Conifer Forest**—Aspen, Birch, Balsam Fir, White Spruce, White Cedar
- Peatland**—Sedge Fen, Black Spruce-Sphagnum Bog, White Cedar-Black Ash Swamp






Itasca – Terminal Moraine and “land of 10K lakes” other than Lake Itasca





Major Land Cover Classes

- Woody and Emergent Wetlands
- Shrub/Scrub
- Lakes, streams, rivers
- Grassland/Herbaceous
- Evergreen Forest
- Developed
- Deciduous Forest

 Kilometers
0 0.5 1 2 3 4





Administrative Offices, Classrooms/Labs, Dining

- 75 - Biome Center: Admin Offices, Auditorium, Classrooms/Labs
- 48 - Station Scientist Office, Stock Room, Classrooms/Labs
- 53 - Dining/Assembly Hall
- 43 - Station Hub
- 40, 44, 45, 48, 49 - Classrooms/Labs

Maintenance Buildings

- 46 - boathouse
- 61, 69 - workshop
- 63 - salt barn
- 64 - tractor barn
- 67 - recycling/trash & fish cleaning
- 73 - boat barn

Restrooms, Bathhouses, Laundry

- 44, 54 (south) - all gender restrooms
- 48, 58, 75 - women's/men's restrooms
- 50, 54 (north), 65 - bathhouse, laundry, restrooms
- 13 (basement), 59 - faculty laundry

Staff Residences

- 4 - Directors' Cabin
- 60 - Facilities Lead Residence

Bunkhouse Cabins


- 20 - 27, 31, 39 - contains toilet and sink
- 32 - 38 - no plumbing

Faculty Cabins

- 1-13, 51-52, 70-72

Research & Demonstration Area Maps



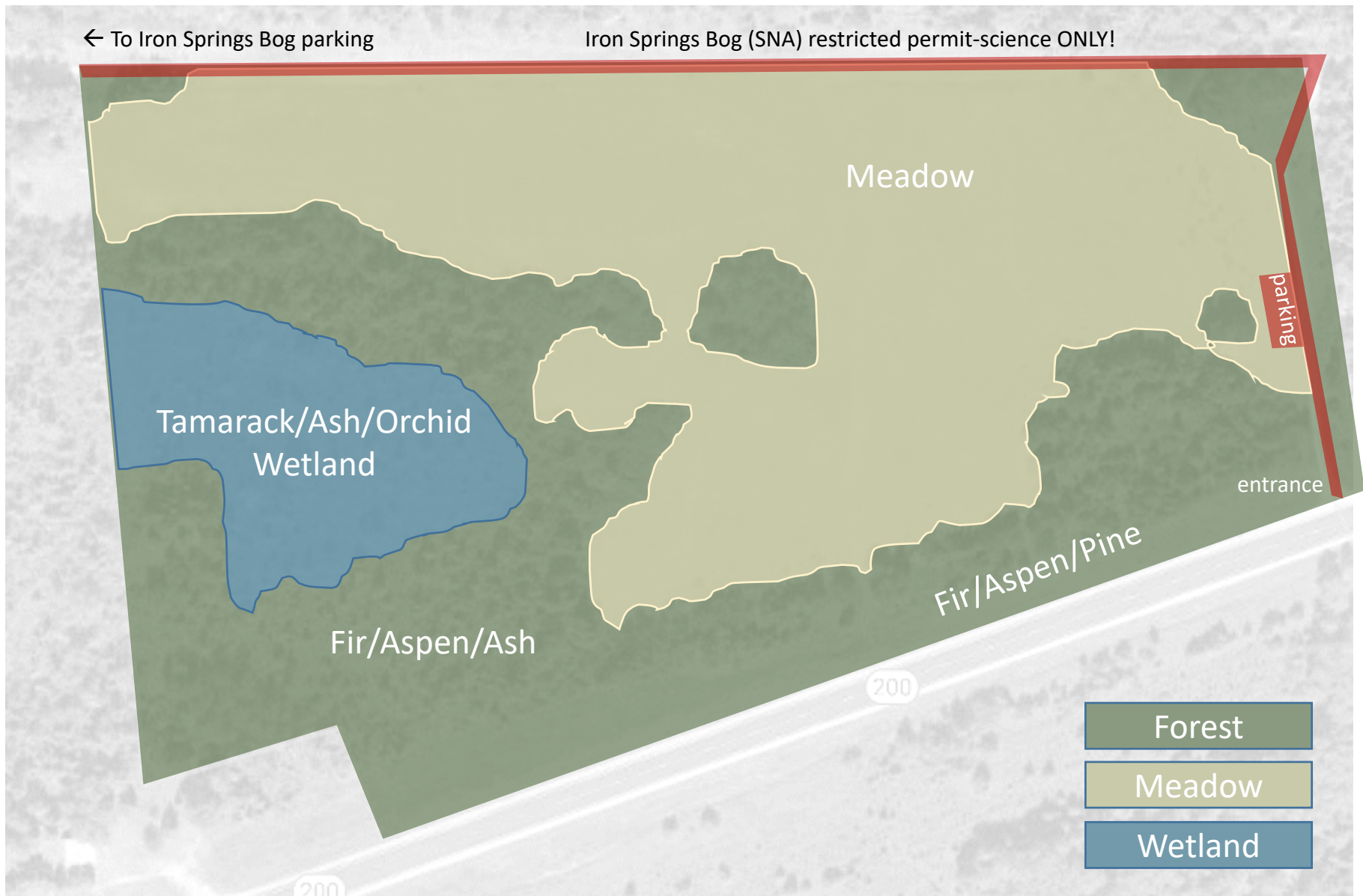
An aerial photograph showing a landscape with a large area outlined in yellow. The area is labeled 'North Plot - 19 acres; 7.7 hectares Science Demonstration Area (SDA)'. The plot contains a mix of green vegetation and brown, cleared land. A road, marked with '200' shields, runs diagonally across the lower portion of the image. The surrounding area is densely forested with green trees.

North Plot – 19 acres; 7.7 hectares
Science Demonstration Area (SDA)

North Plot – Itasca (19 Acres; 7.7 hectares)

← To Iron Springs Bog parking

Iron Springs Bog (SNA) restricted permit-science ONLY!





South Plot – 44 acres; 17.8 hectares
Research Area

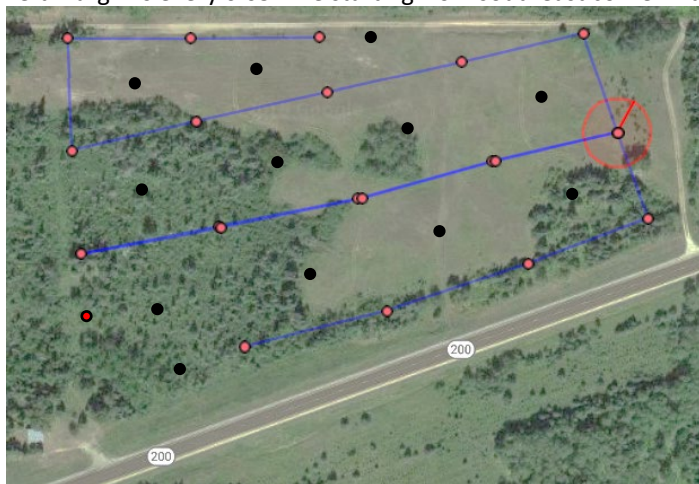
South Plot – Itasca (44 acres; 17.8 hectares)



Grid with coordinates used for a 'timber cruise' and coarse woody debris (CWD) sampling in 2018

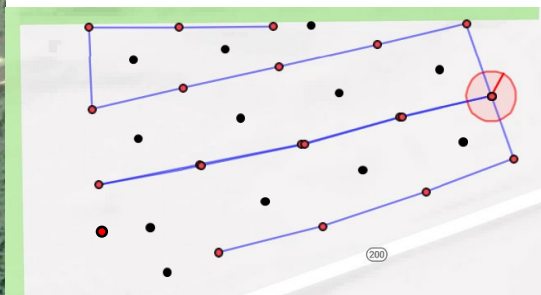
North Plot grid walk

Left margin is every 0.05 mile starting from southeast corner marker and walking north, first



Red dots/boxes – Sample these first (1st pass)

Gray dots/boxes – Sample second (2nd pass)



47.2533, - 95.2388		47.2533, - 95.2378		47.2533, - 95.2367				
	47.2531, - 95.2383		47.2532, - 95.2373		47.2533, - 95.2362			
47.2527, - 95.2387		47.2529, - 95.2376		47.253, - 95.2366		47.2532, - 95.2357		47.2534, - 95.2346
	47.2525, - 95.2381		47.2527, - 95.2371		47.2529, - 95.2361		47.2531, - 95.2351	
47.2521, - 95.2386		47.2523, - 95.2374		47.2525, - 95.2364		47.2527, - 95.2354		47.2529, - 95.2344
47.2519, - 95.2386	47.2519, - 95.2379		47.2521, - 95.2368		47.2523, - 95.2358		47.2525, - 95.2348	
	47.2516, - 95.2378	47.2517, - 95.2371		47.2519, - 95.2361		47.2521, - 95.2351		47.2524, - 95.2341

Grid with coordinates used for a 'timber cruise' and coarse woody debris (CWD) sampling in 2018

South Plot grid walk

Left margin is every 0.05 mile starting from southeast corner marker and walking north, first



<http://www.hillmap.com/m/ag1zfmhpbGxtYXAtaGRychULEghTYXZIZE1hcBiAgID0t9W-Cgw>

								47.2531, - 95.2285		47.2533, - 95.2274
									47.2529 , - 95.2281	
				47.2525, - 95.231			47.2528, - 95.2297		47.2527, - 95.2285	47.2527, - 95.2274
					47.2523, -95.2305		47.2524 , - 95.2292		47.2524 , - 95.228	
47.252, - 95.2335		47.2521, -95.2323		47.252, - 95.231		47.252, - 95.2297		47.252, - 95.2285		47.252, - 95.2274
	47.2517 , - 95.233		47.2517, - 95.2317		47.2517, -95.2305		47.2517 , - 95.2292		47.2517 , - 95.228	
47.2515, -95.2335		47.2514, -95.2323		47.2514, - 95.231		47.2513, - 95.2298		47.2513, - 95.2285		47.2513, - 95.2274
	47.2511 , - 95.233		47.251, - 95.2317		47.251, - 95.2304		47.251, - 95.2291		47.2509 , - 95.228	
47.2507, -95.2336		47.2507, -95.2324		47.2506, - 95.231		47.2506, - 95.2297		47.2505, - 95.2285		47.2506, - 95.2274
	47.2503 , - 95.233		47.2503, - 95.2317		47.2503, -95.2304		47.2503 , - 95.2292		47.2502 , - 95.228	
47.2499, -95.2336		47.25, - 95.2324		47.2499, - 95.231		47.25, - 95.2297		47.2499, - 95.2285		47.2499, - 95.2273