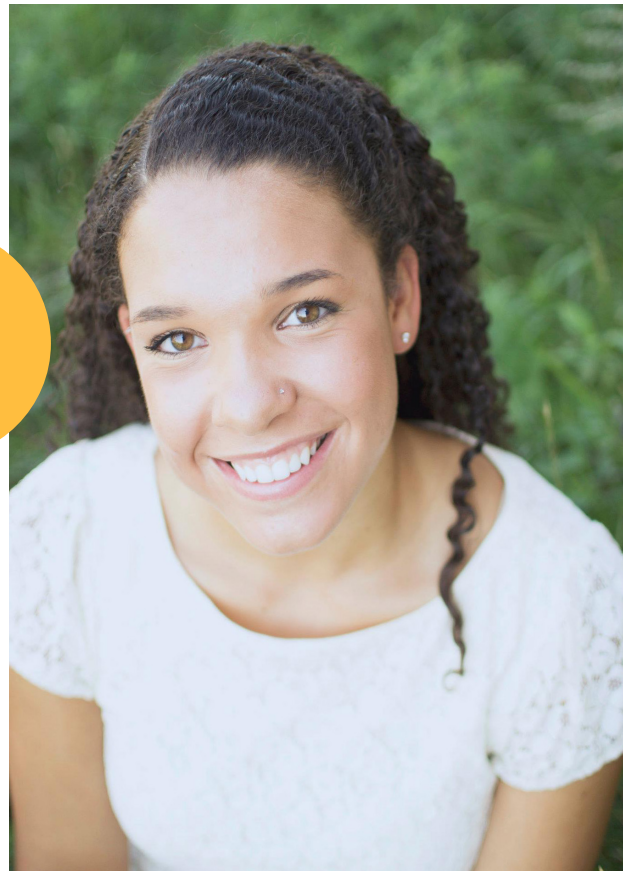


CBS Pre-Health Student

Kelly Fogelson

A CBS sophomore studying neuroscience, Kelly's involvement in pre-med activities includes the Future Physicians series through the Health Careers Center, the Dean's Scholars Program and the Pre-Med Scholars Program. She looks forward to enhancing her future medical school application through these experiences.

Kelly plans to attend medical school after graduation but is not yet sure what kind of physician she would like to become. In her opinion, there is no other career field that comes close to offering the variety of thrilling and meaningful job options as the medical field.

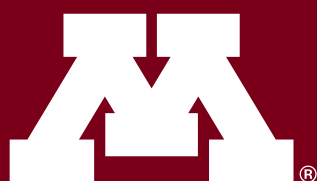


Student Scoop

Neuroscience major

Next step:
Medical school

Interesting fact:
Her go to study snack is trail mix.



College of
Biological Sciences

UNIVERSITY OF MINNESOTA
Driven to DiscoverSM